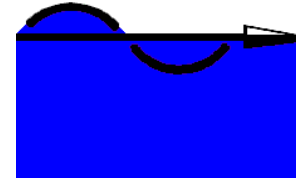


Lerwick, Raker Pile Jackets

Client: Lerwick Harbour Trust
 Consultants: Arch Henderson
 Contractor: Balvac
 Diving Contractor: Connolly Diving
 1997/98



Proserve Limited

80 Priory Road,
 Kenilworth,
 Warwickshire, CV8 1LQ,
 England
 Telephone: +44 (0)1926 512222
 Facsimile: +44 (0)1926 864569
 Email: info@proserveltd.co.uk
 Web: www.proserveltd.co.uk



Location Plan

Raker Piles

There are several factors that make raking piles a significantly different design challenge over vertical piles.

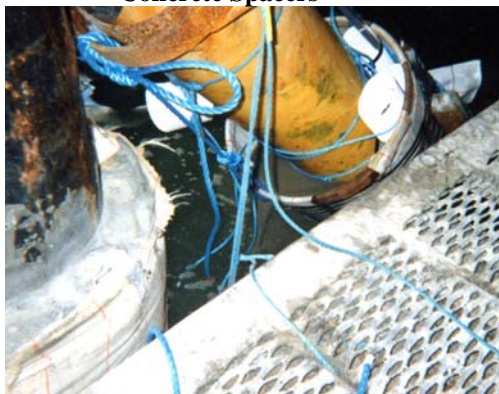


Concrete Spacers

PVC Spacers are replaced by concrete ones on the upper surface of the raked pile, so as to prevent any possible distortion, and reduction of cover, caused by the weight of concrete.



Reinforced Mesh Corset



Top Support

The mesh corset is also reinforced, this prevents it sagging, under its own weight on the slope, and reducing the concrete cover.

The Filler sleeves are positioned on the upper surface of the pile, and are filled as normal. The top support detail, shown left, is specially designed to take into account the angle of rake in the pile being protected.



Corset Rope Ties



Jacket Filling



Steelwork Support to Pile Jacket Node

Junctions between piles can also be catered for, using specially designed and fabricated steelwork shutters, as seen left.